

Miernik baterii Konnwei KW600



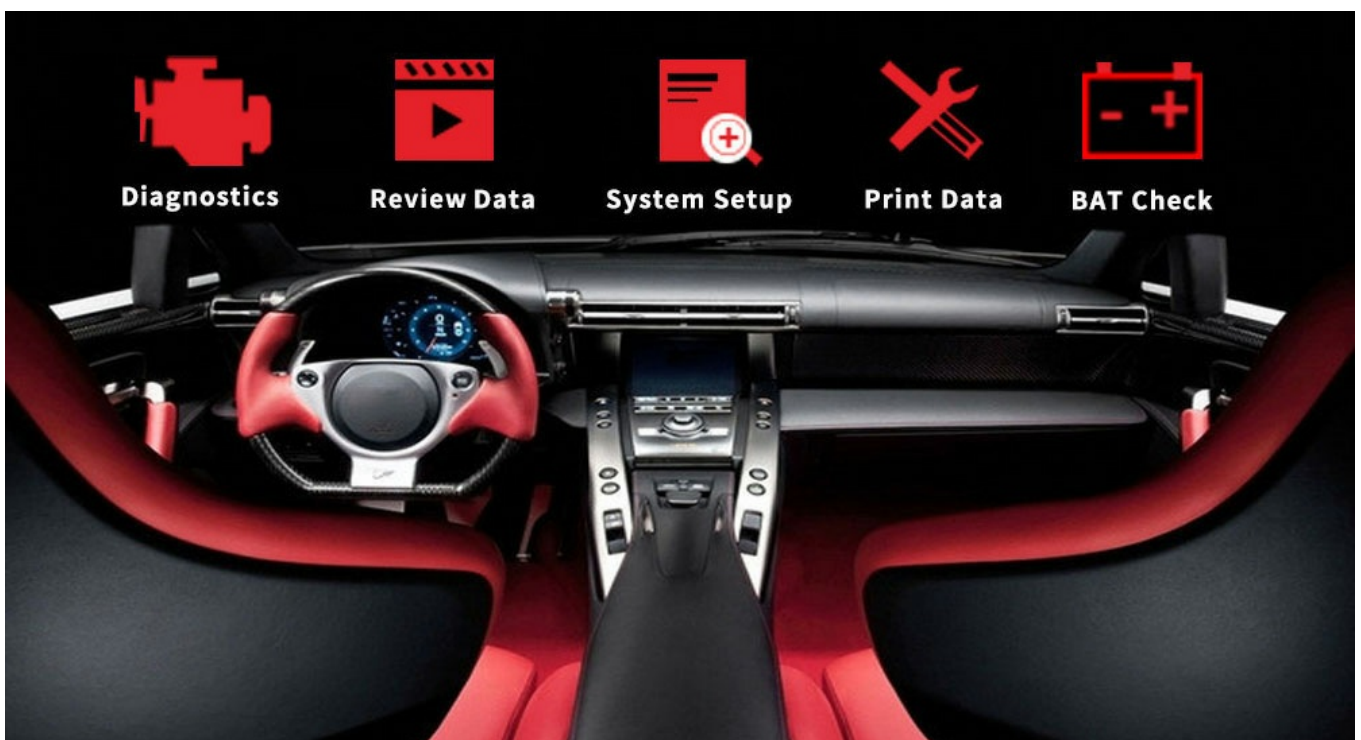
Marka:
Konnwei

Producent:
LECHPOL ELECTRONICS
LESZEK Spółka
komandytowa

Kod produktu:
KW600

Kod EAN:
5901890097024

Opis



KONNWEI[®]

KW600 Car Battery Tester



- Cranking Test
- Start charging test
- Date Storage and print
- Upgradeable
- Live voltage graphing
- monitor

Quick detection function

support system: XP WIN7 WIN8 WIN10



Battery voltage test



Battery Health test



Data Storage



Cranking test



Ripple Analyze



Printing



Load Test



Resistance Test



Analyze the Battery Healthy Status

Support for 12V 100-2000 CCA 220AH car/boat/motorcycle and more



Covers 9 Battery Standards

Measure Standard

Test Range

Cold cranking Amps(CCA)

100-2000CCA

International Electrot-Echnical Commission(IEC)

100-1400CCA

Europe-Norm(EN)

100-2000CCA

Deutsche Industrie-Norm(DIN)

100-1400CCA

Cranking Amps(CA)

100-2000CCA

Battery Council International (BCI)

100-2000CCA

Marine Cranking Amps(MCA)

100-2000CCA

Society of Automotive Engineers(SAE)

100-2000CCA

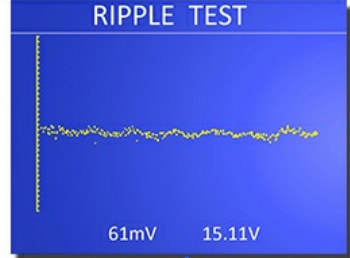
Japanese Industry Standard(JIS)

126A17-245H52



Charging Test

In-Vehicle
Battery Test
Cranking Test
Charging Test



Charging Test
Increase RPM to 2500 r/min and keep it 5 seconds, Press ENTER to continue.

Charging Test

| | |
|----------|--------|
| Loaded | 14.91V |
| Unloaded | 13.84V |
| Ripple | 61mV |

CHARGING NORMAL



Battery Location

In-Vehicle

Out-Of-Vehicle

Set Battery Rating

100 CCA

Please input the CCA value in the label of the battery

Set Battery Rating

220 CCA

Please input the CCA value in the label of the battery

SOH 27%

REPLACE

| | |
|-----------------------|------------|
| R:12.89 ^{mΩ} | GB : 190A |
| STD:360A | VOL:12.17V |

Checks Batteries Anywhere You Want



Out-Of-Vehicle

In-Vehicle





12 Languages :

Chinese, Korean, English, French, Spanish,
German, Russian, Japanese, Italian,
Portuguese, Polish, Dutch, Persian .

13 language choice



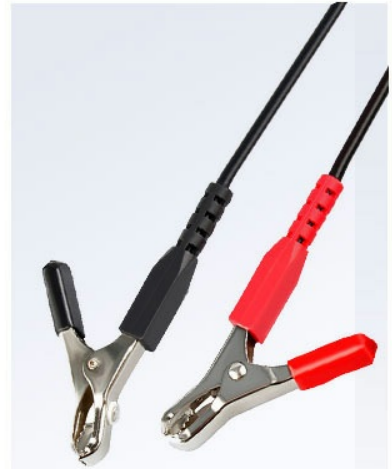
Premium Car Diagnostic Tool



**KONNWEI Original System,
Private Mould**



**Anti-shock and slip material
with cozy handheld feeling**



intelligent clamp

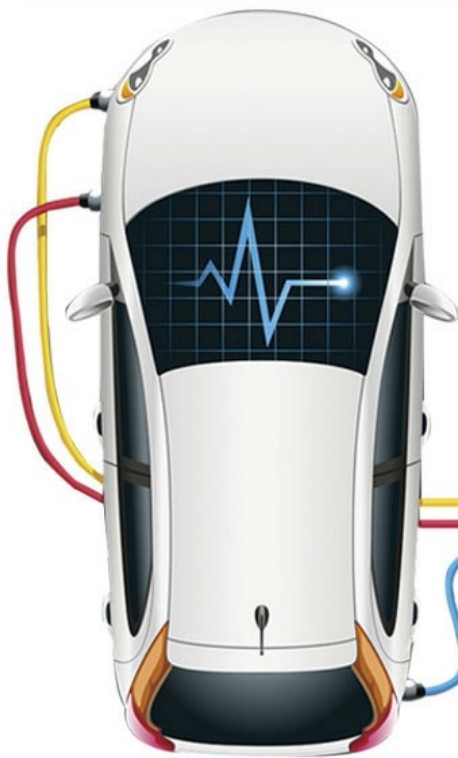
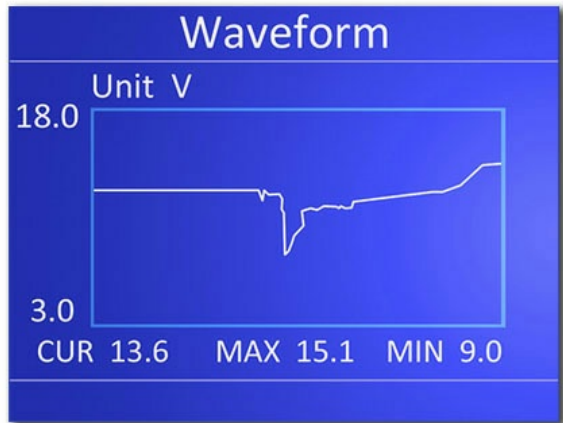


Car Data Always Know

Check the status for your car anytime and eliminate all threats for it

KONNWEI

Waveform of automobile battery detection

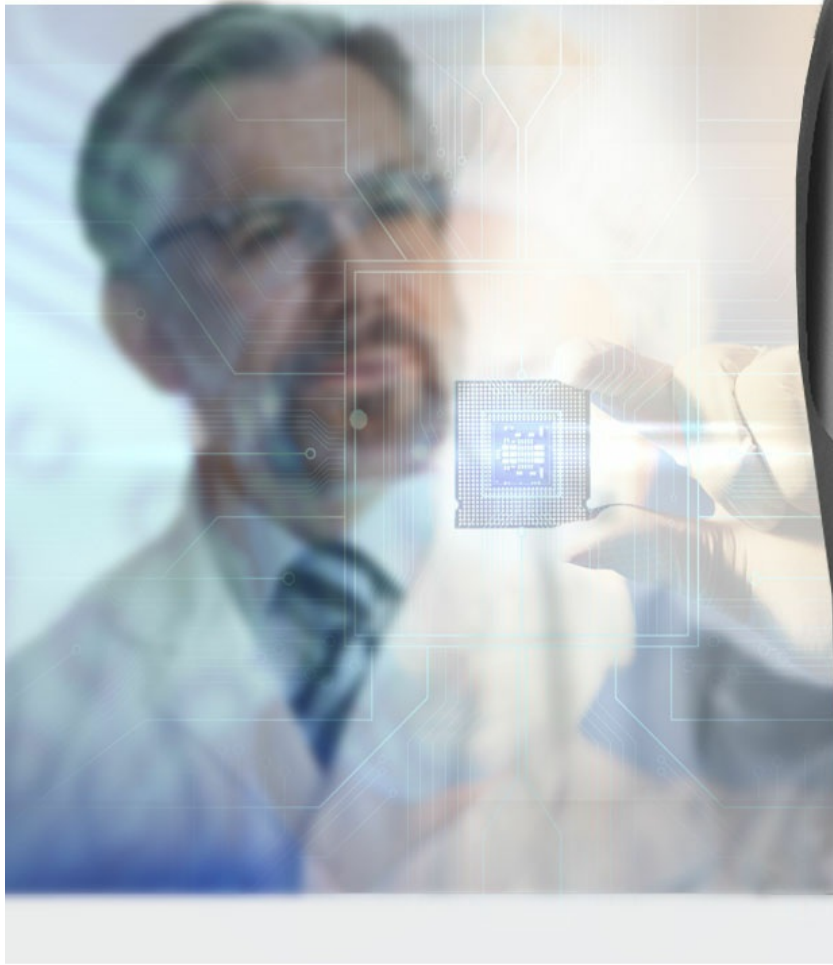


Global Rating Systems



STM32F103C8T

Fast processing speed and large memory



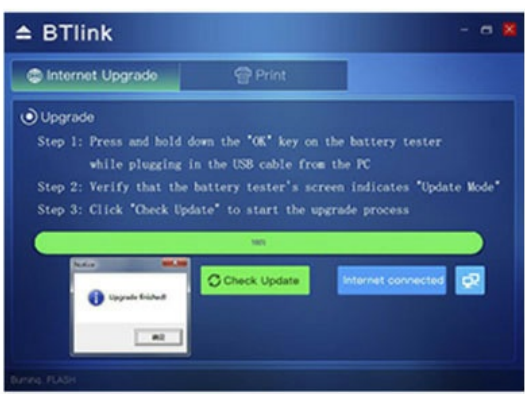
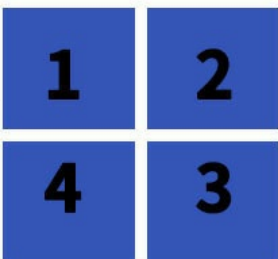
life-time Free print and Upgrade

Print & Upgrade: One Click to free upgrade software and print out diagnostic report connected





Keep pressing any button of the scanner
BEFORE connecting it to your PC



| SCAN TOOL | MODE | LATEST SW VERSION | DESCRIPTION | DOWNLOAD |
|---------------|------|-------------------|--|----------|
| KONNWEI KW590 | V2.0 | - | UPLINK - Update Service Tool for KONNWEI KW590 (Turn off anti-virus software before download) | |
| KONNWEI KW580 | V2.1 | - | UPLINK - Update Service Tool for KONNWEI KW580/ KW580S (Turn off anti-virus software before download) | |
| KONNWEI KW518 | V2.0 | - | UPLINK - Update Service Tool for KONNWEI KW518 (zip file type, close antivirus software if there's driver install failed) | |
| KONNWEI KW530 | V2.1 | - | UPLINK - Update Service Tool for KONNWEI KW530 (zip file type, close antivirus software if there's driver install failed) | |
| KONNWEI KW550 | V2.1 | - | UPLINK - Update Service Tool for KONNWEI KW550 (File type: .zip, .RAR , please kindly use the WIN RAR to unzip before install) | |
| KONNWEI KW500 | V2.1 | V10.0 | BTLINK - Update Service Tool for KONNWEI KW500 Professional Battery Analyzer | |

** KONNWEI KW500 does not support online update anymore.



KW600

Package Contents



KW600



USB Cable



User Manual



Packing Box

Plastic box



KW600

NEW SCAN TOOL OBDII.



Opis techniczny

Do akumulatorów 12 V

Mierzone parametry: SOC, SOH, rezystancja

Zasilanie: z podłączonego akumulatora

Wyświetlacz: LCD

Wymiary: 140 x 80 x 24 mm

Język interfejsu: angielski, niemiecki, francuski, hiszpański, włoski, portugalski, polski, niderlandzki

Specyfikacja

Dane logistyczne

Gabaryt

W001G001-A-2

| Dane logistyczne | |
|------------------|---|
| GabarytMAX | 4 |

| Jednostka miary | Ilość | Waga netto | Waga brutto | Szer. x Dł. x Wys. |
|-----------------|---------|------------|-------------|-----------------------|
| szt. | 1 szt. | 0.25 Kg | 0.4 Kg | 15 cm x 6 cm x 19 cm |
| kart. | 50 szt. | 20 Kg | 20 Kg | 49 cm x 49 cm x 41 cm |