

USER MANUAL

**Universal Car OBD II Diagnostic Scanner
Professional Vehicles Full System Diagnostic Tool
Brand : KONNWEI
Model : KDIAG**



Download **KDIAG** App On App Store & Google Play

1

KDIAG Description:

KONNWEI KDIAG Bluetooth OBD2 full system scanner supports all car systems diagnostic function. It makes your smart device become a professional vehicle diagnostic tool. It is compatible with android and ios system. Auto-VIN function supports the KDIAG identifies most car models automatically. Full system Vehicle health report will be automatically created after diagnosis, report can be shared. Live Data Stream combined Graphing+Data Record better for monitoring vehicle performance and analyze the abnormal parameters. KONNWEI KDIAG is a professional diagnostic tool for DIYers and mechanics.

Advantages :

Share/Help/Support with KDIAG in KDIAG+ App.
Full coverage for more than 98% vehicle models in the market.
Professional industrial design with dust prevention and shockproof.
Free update lifetime , much valuable than other scanners in the market .

1. Connection and Settings

1.1 Location of the Data Link Connector(DLC)

The DLC (Data Link Connector or Diagnostic Link Connector) is typically a 16-pin connector where diagnostic code readers interface with the vehicle's on-board computer. The DLC is usually located 12 inches from the center of the instrument panel(dash), under or around the driver's side for most of the vehicle. If Data Link Connector is not located under the dashboard, a label should be there to tell it's the location. For some Asian and

2

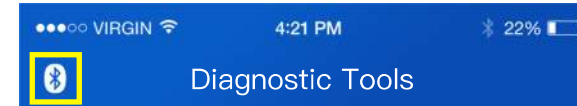
European vehicles, the DLC is located behind the ashtray and the ashtray must be removed to access the connector. If the DLC cannot be found, refer to the vehicle's service manual for the location.



1.2 Setting

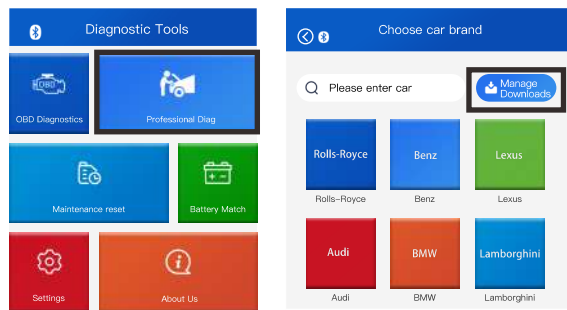
- 1) Turn the ignition off.
- 2) Locate the vehicle's 16-pin data link connector(DLC).
- 3) Plug the KDIAG OBDII adapter into the vehicle's DLC.
- 4) Turn on the ignition and engine fully.
- 5) Turn on KDIAG APP from your device, and click the bluetooth icon from the APP. CAUTION: DONOT PAIR IT from Phone settings page.

Connect Bluetooth



- 6) Enter "Professional Diag", you will need to click "Manage Downloads" to download the car data that you want .

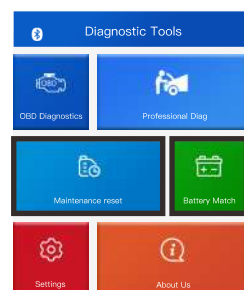
3



2. KDIAG support one-click AUTO-VIN or manual selection

The KDIAG will automatically find your vehicle's VIN code and compared with its database to help you fast enter the diagnostic systems without selecting car models and year one by one. If it can't identify the vehicle information, manual input and select is also available.

You can also have quick access to 2 special functions from main page as below: **Maintenance Reset and Battery Match**



4

3 OBDII/EODB Engine System Diagnostics

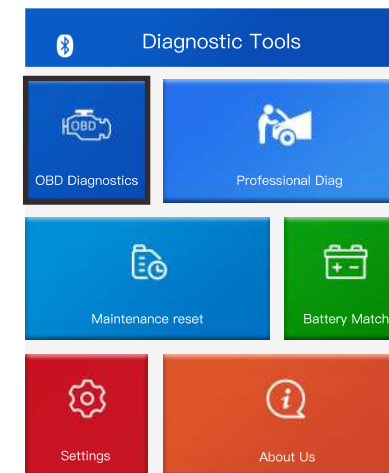
3.1 Vehicle Coverage

The scan tool is specially designed to work with all OBD II compliant vehicles, including control area network (CAN), it is required by EPA that all 1996 and newer vehicles (Cars and light trucks) sold in the united states must be OBD II compliant and this includes all American, Asian and European vehicles. A small number of 1994 and 1995 model 1994 or 1995 vehicle is OBD II compliant, check the vehicle year gasoline vehicles are OBD and compliant. To verify if a emissions control information(VECI) Label, which is located under the hood or by the radiator of most vehicles. If the vehicle is OBD II compliant, the label will designate "OBD II Certified". Additionally, Government regulations mandate that all OBD II compliant vehicles must have a "common" sixteen-pin Data Link Connector (DLC) For the vehicle to be OBD II compliant dash and the vehicle emission control information label must state that the vehicle is OBD II compliant .

3.2 OBDII Diagnostic Menu

This option presents a quick way to check for DTC, isolate the cause of the illuminated Malfunction Indicator Lamp (MIL), check monitor status prior to emissions certification testing, verify repairs, and perform a number of other services that are emission-related.

5



4. Service Procedures

If you have any questions, please contact your local store, distributor or visit our official website at www.konnwei.com or contact our service email : konnwei@konnwei.com If it becomes necessary to return the tool for repair, please contact your local distributor for more information.

6