

# Welcome to use wireless usb adapter instruction manual for the driver.

## Notice:

- 1.This instruction manual is for study and communication only.If you want to test it,please use it in your own AP not in illegal way.
- 2.Please install driver first before insert the wireless usb adapter.

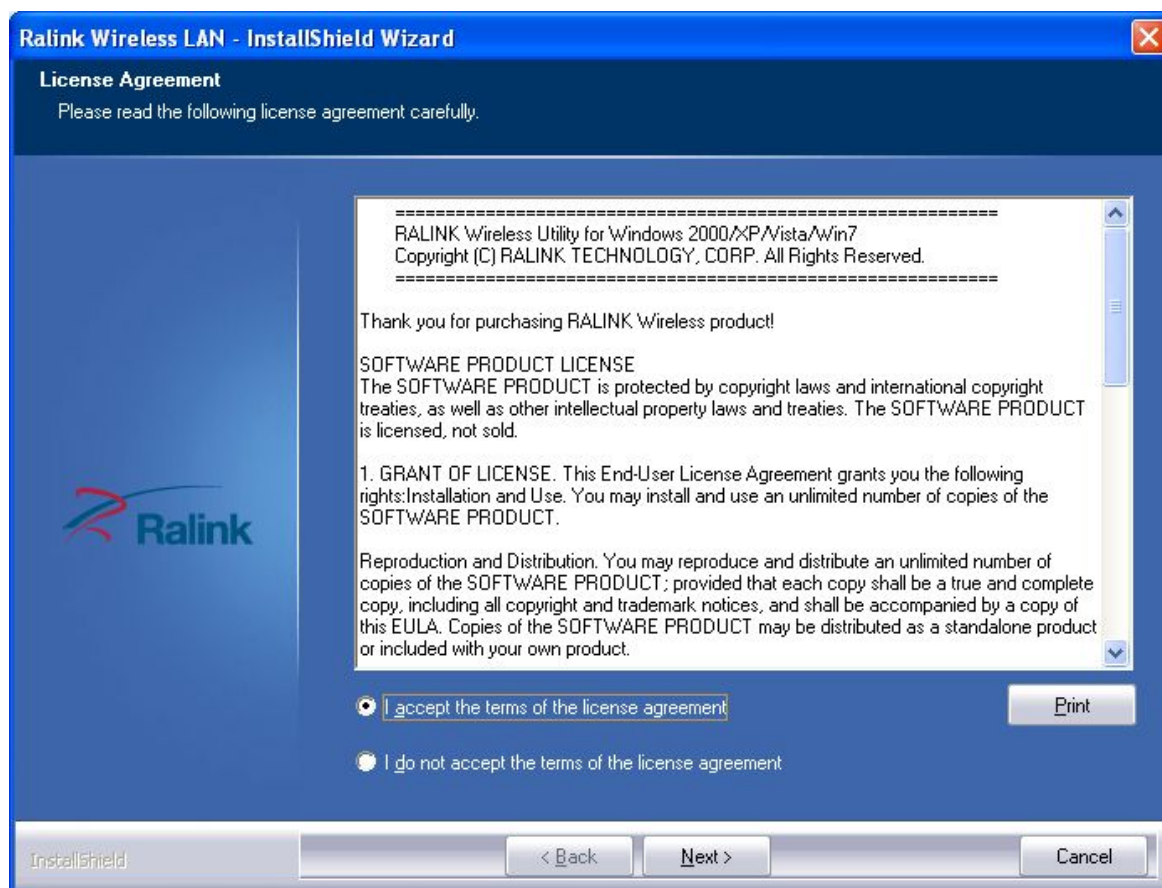
## 1.Install the driver

- ①Put the driver cd into CD-ROM and open the CD file,click the “setup.exe”,then choose the the corresponding system.

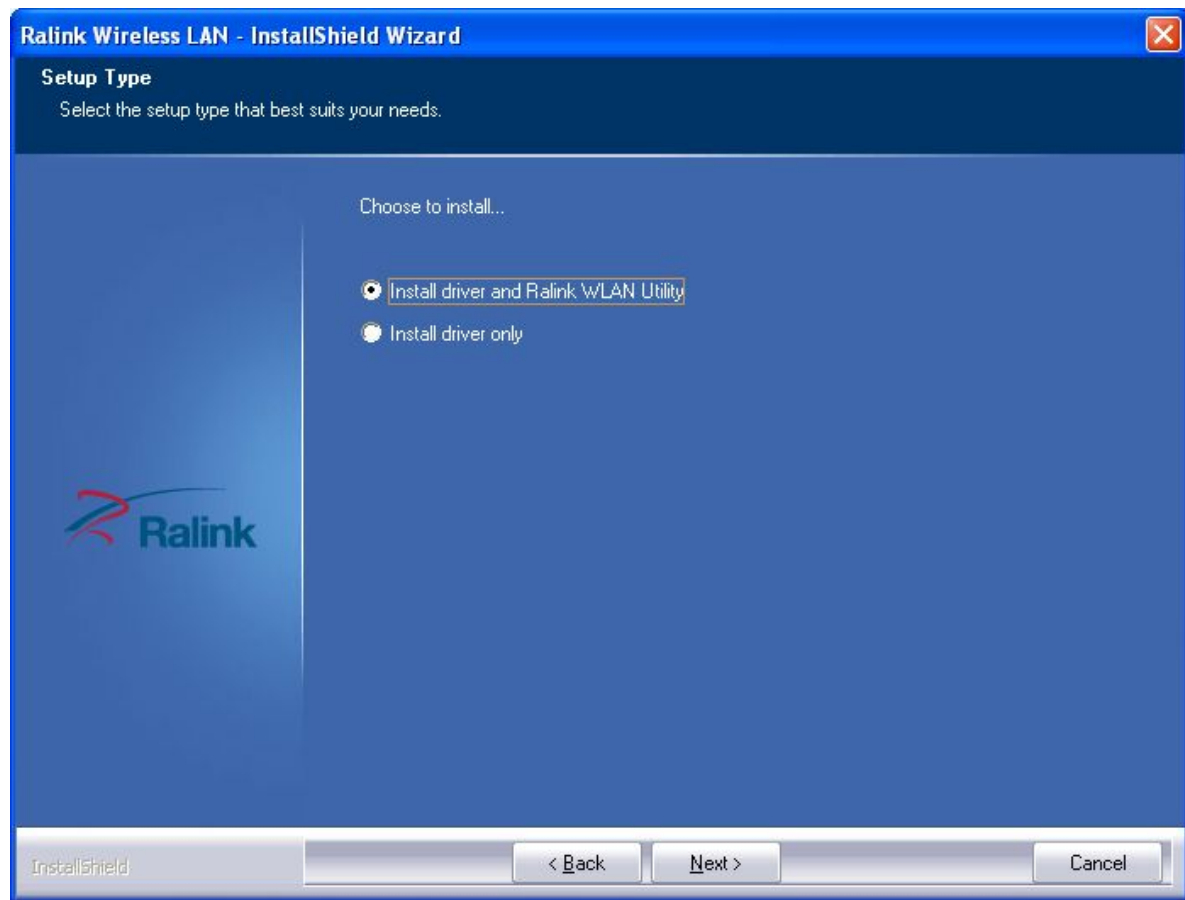


- ②Double click **setup.exe** and install. (Notice : Before you install driver, pls do not insert wireless usb adapter)

- ③Choose ☒ **I accept the terms of the license agreement**, click “Next”:



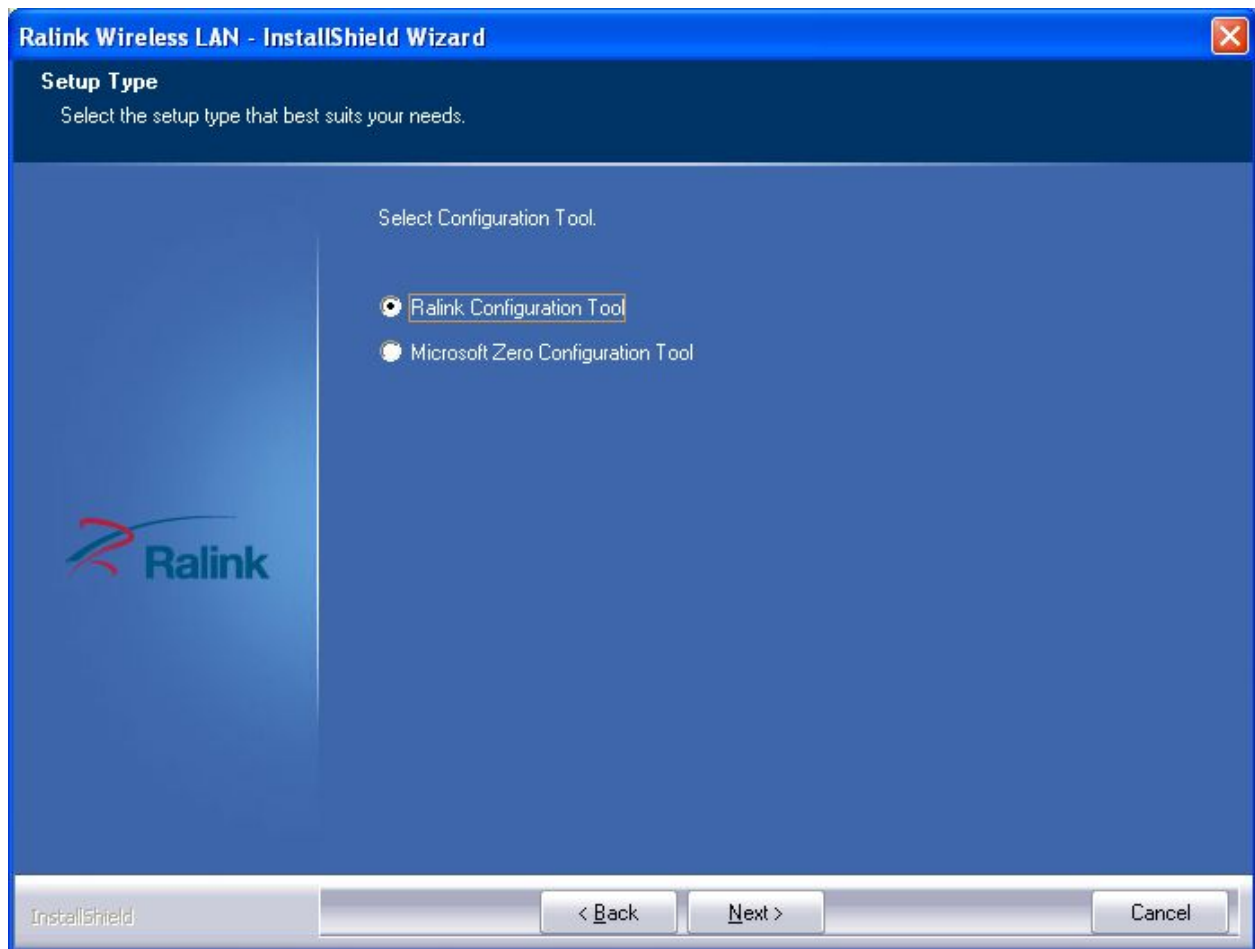
④ Choose the ☒ Install driver and Ralink WLAN Utility, click “Next”



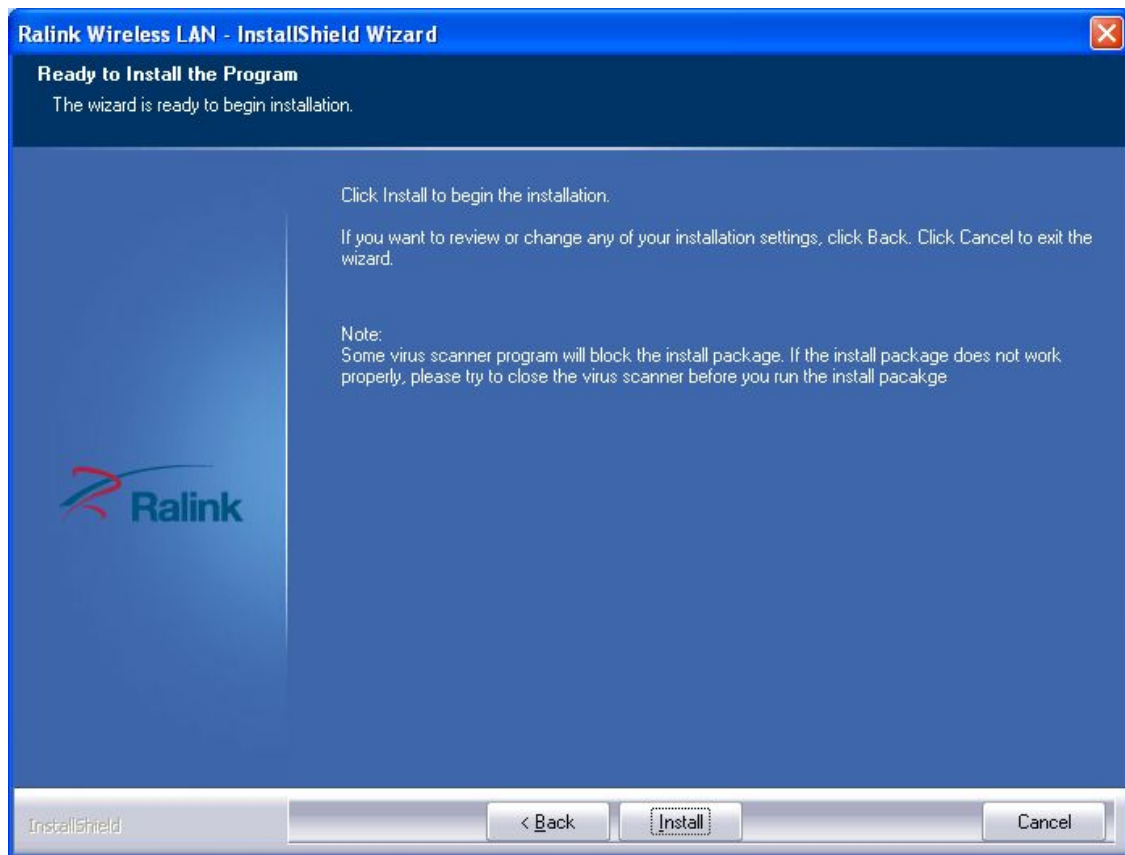
⑤ Appearing the following picture, then choose the icon and click “Next”:



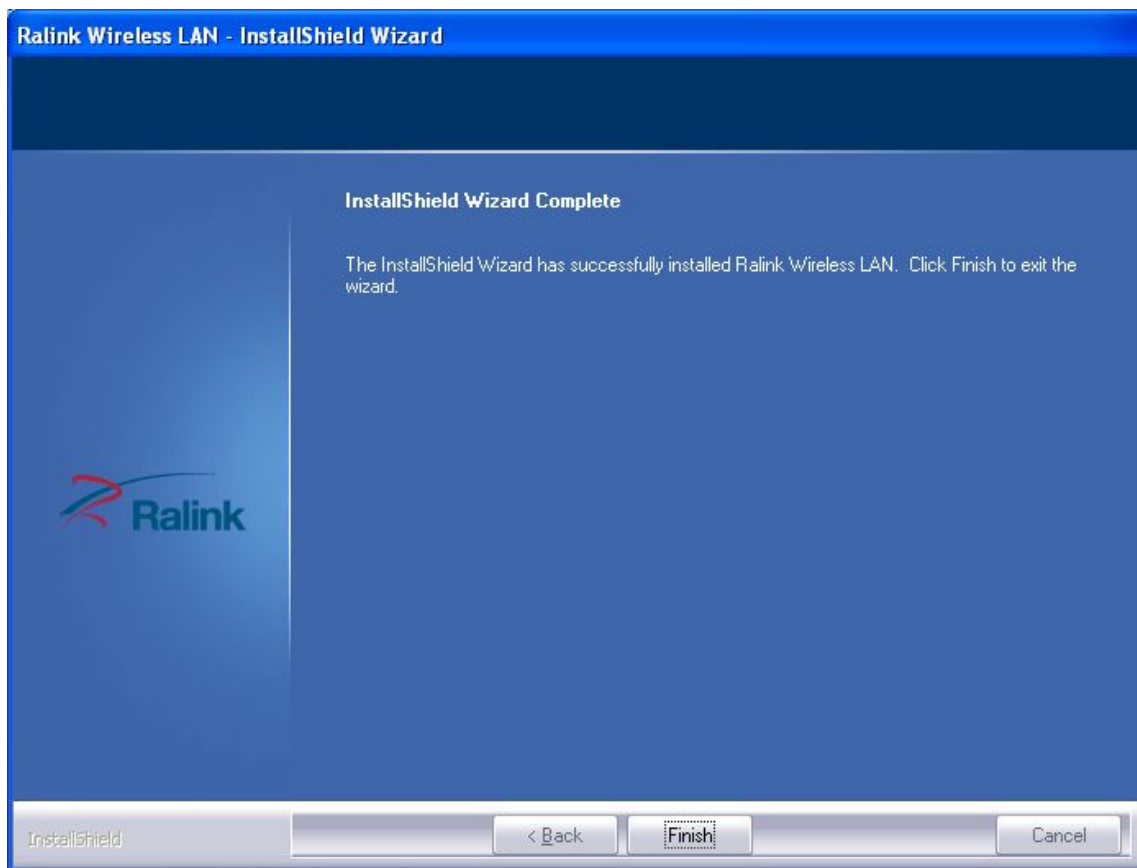
and




⑥Please click “install” in this pic, (Notice:If the driver couldn't be setup,pls close your antivirus program before installing,because some antivirus maybe influenced the the installation.)




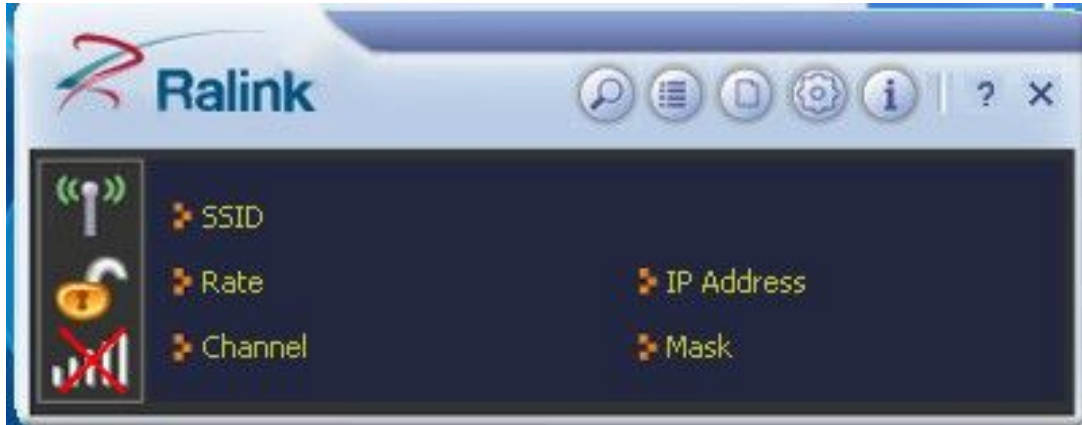
⑦ After installed the driver ,click “Finish”:




You will see an icon  in your taskbar of computer after installed the driver,it means that the driver installation finished.Then insert our wireless usb adapter to you computer ,after finished the automatic updates ,the computer can connect network.

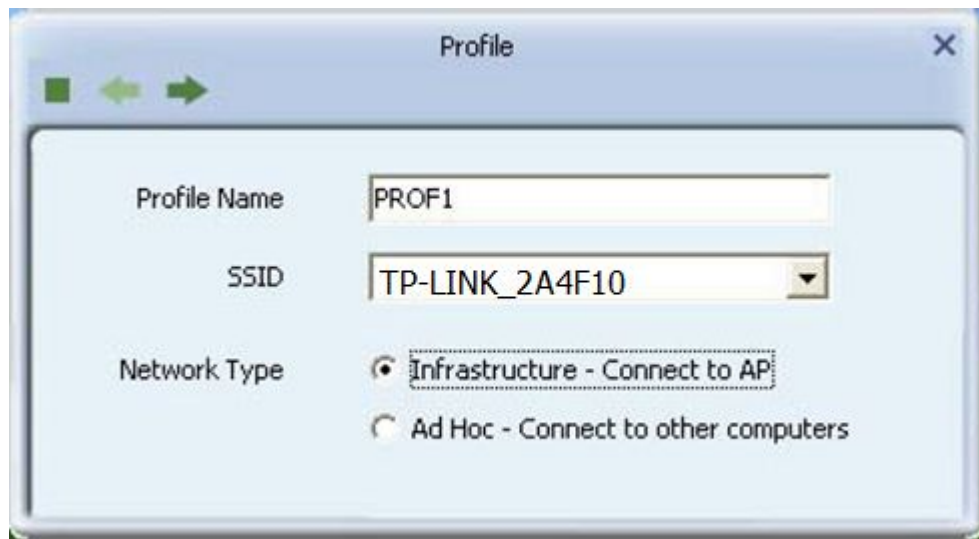
## 2. Network Settings

① Double click the icon  in the lower right of Taskbar,appearing the following picture:



②Click the button , appearing the following picture,then click the button “The image shows the Site Survey window. It has a title bar with the text "Site Survey" and a close button. There are two icons in the top left: a refresh icon and a list icon. The main area is a table listing various wireless networks. The table has columns for SSID, signal strength (represented by a diamond icon), a numerical value, signal quality (represented by colored bars: blue, green, purple), a lock icon, and a percentage. The network "TP-LINK\_2A4F10" is highlighted in blue. At the bottom, there is an "AP Information" section with fields for SSID, MAC Address, Authentication, and Encryption. The SSID is "TP-LINK\_2A4F10" and the MAC Address is "D8-5D-4C-2A-4F-10". The Authentication is "WPA-PSK..." and the Encryption is "AES". There is also a wireless signal icon in the bottom right corner.

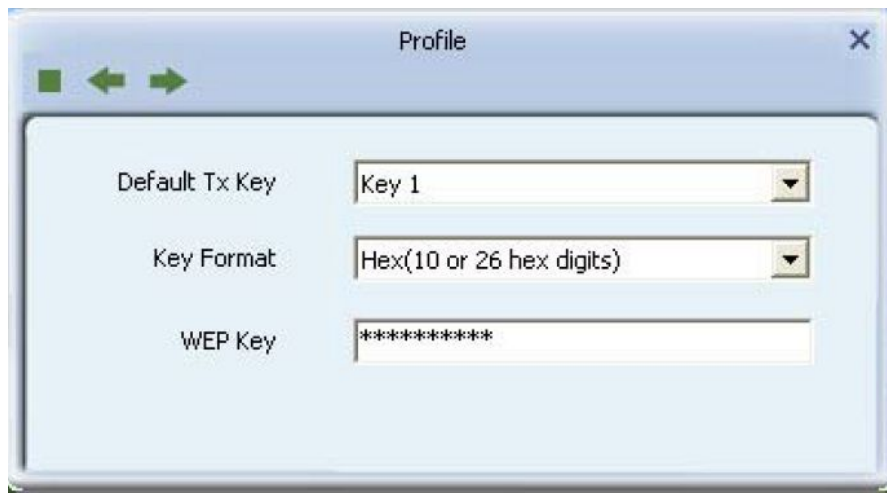
③Click and choose the your network name (here,our network is TP-LINK\_2A4F10) .Then click the button  in above picture ,appearing the following picture:



④Then click the icon  (Next),appearing the picture as follows:

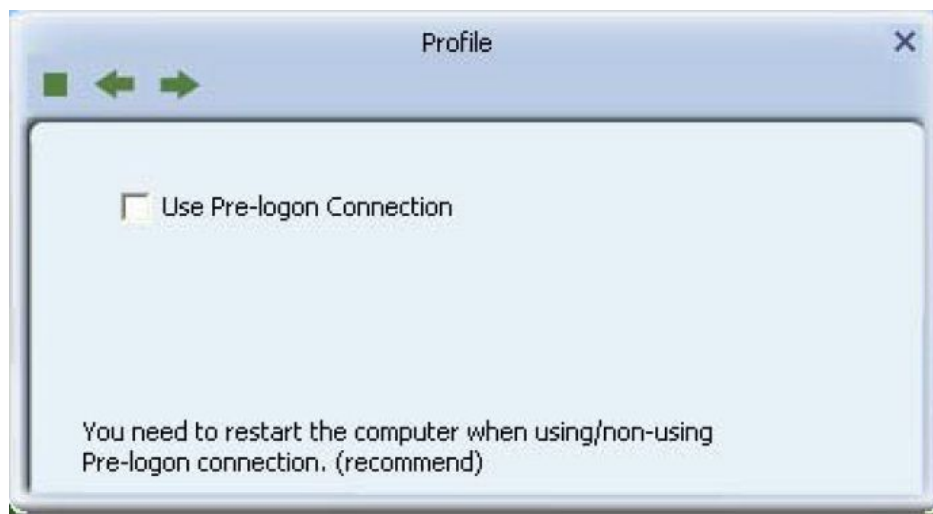


⑤ Click the icon  again, you will see the picture:



⑥ Enter the password in the blank area of “WPA Key”, then click the icon , appearing the following picture:


(Notice :you should enter the correct password ,or else you wouldn't connect the network and get the IP )





⑦ Click the icon :



⑧ Click the network “TP-LINK\_2A4F10” , then click the icon :



The software can get the IP address automatically ,after connect it successfully ,then you can share the internet .