

A10T/A12T

Temperature Humidity Meter User Manual

I. Product functions and specifications

1. Basic functions

Indoor temperature / humidity testing
Outdoor temperature testing (only A12T)
Records MAX/MIN value of temperature and humidity function
Clock function: conversion for 12/24 hour format
Alarm clock function: alarm time up to 60 seconds

2. Technical specifications

(1). Technical parameters

Function	Range	Resolution	Accuracy	Sampling frequency	Remark
Temperature	Indoor	-10~50℃	0.1℃	±1℃	Guaranteed accuracy range: 0~40℃
	Outdoor (A12T)				
Humidity	10~99%RH	1%RH	±5%RH	10s	Guaranteed accuracy range: 18~28℃

(2). Comfort level symbol

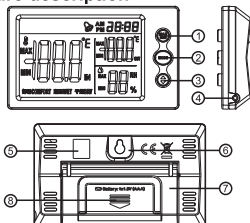
No display: temperature <20℃ or temperature >26℃, humidity 50 ~ 70% RH;
Comfort: temperature 20 ~ 26℃, humidity 50 ~ 70% RH;
Wet: at any temperature, humidity >70% RH;
Dry: at any temperature, humidity <50% RH

(3). Other specifications

Battery: 1.5V (AAA)
Storage temperature: -20 ~ 60℃
Storage humidity: 20 ~ 80%RH

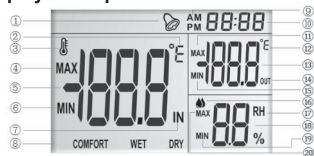
II. Product description

1. Structure description



1	MAX/MIN value key	2	Mode key
3	Adjustment key	4	External probe socket (A12T only)
5	QR-code	6	Wall-mount hole
7	Stand	8	Battery cover

2. Display description



1	Alarm symbol
2	Temperature unit(℃)
3	Temperature symbol
4	Max value of temperature measured by inner sensor
5	Value of temperature measured by inner sensor
6	Min value of temperature measured by inner sensor
7	Symbol of temperature measured by inner sensor
8	Comfort level symbol
9	AM / PM

10	Time
11	Max value of temperature measured by outside sensor(only A12T)
12	Unit of temperature measured by outside sensor(only A12T)
13	Value of temperature measured by outside sensor(only A12T)
14	Symbol of temperature measured by outside sensor(only A12T)
15	Min value of temperature measured by outside sensor(only A12T)
16	Humidity symbol
17	Humidity unit
18	Value of measured humidity
19	Min value of measured humidity
20	Max value of measured humidity

III. Operating instructions

1. Battery installation instructions

According to the direction on the back cover, to open the battery compartment door, remove the battery separator, and then close the battery compartment door and the product can be used.

2. Instructions for keys

MODE key:

When not in setup mode, short press to switch between the clock display and alarm clock display;

- In clock display: Long press to set up the clock Minute-> Hour and confirm;
- In alarm clock display : Long press to set up the alarm clock Minute-> Hour and confirm;

MAX/MIN key:

Short press to switch between MAX, MIN, and Real Time measured value of temperature and humidity.

When displaying the MAX/MIN value, long press MAX/MIN key for 2 seconds to clear the previous memory and restart recording of MAX/MIN value.

◆ Key :

In setup mode: To adjust the settings of the object (short press for slow adjustment; long press for fast adjustment)

When not in setup mode:

- In clock mode: short press for conversion of 12/24 hour format
- In alarm clock mode: short press to turn ON /OFF alarm clock function

3. Operating instructions

A. Clock mode

“:” symbol between Hour and Minute will flash every 1 second.

If the alarm clock function is enabled, a bell symbol will appear. Short press Mode key to switch to alarm clock mode.

Long press Mode key to set clock _Minute that can be adjusted by pressing ◆ key.

Press Mode key again to set clock _Hour that can be adjusted by pressing ◆ key.

Press Mode key again to confirm the setup information, then press ◆ key to switch 12/24 hour format

B. Alarm clock mode

“:” symbol between Hour and Minute appears, but does not flash.

If the alarm clock function is enabled, a bell symbol will appear and flash every 1 second.

Short press Mode key to switch to clock mode.

Long press Mode key to set alarm clock_ Minute that can be adjusted by pressing ◆ key.

Press Mode key again to set alarm clock _Hour that can be adjusted by pressing ◆ key.

Press Mode key again to confirm the setup information, then press ◆ key to turn ON/OFF the alarm clock function.

IV. Notes


1. When initially using or replacing the battery, the clock will reset.
2. Please put the battery back to the designated recycle site if the battery runs out.

UNI-T

UNI-TREND TECHNOLOGY (CHINA) CO., LTD.

No6, Gong Ye Bei 1st Road,
Songsshan Lake National High-Tech Industrial
Development Zone, Dongguan City,
Guangdong Province, China
Tel: (86-769) 8572 3888
<http://www.uni-trend.com>

说明书菲林做货要求:

序号	项目	内容	
1	尺寸	展开尺寸: 210X140MM 折后尺寸:105X70	
2	材质	60g书纸	
3	颜色	单色	
4	外观要求	完整清晰、版面整洁, 无斑墨、残损、毛边、刀线错位等缺陷。	
5	装订方式	无	
6	表面处理	无	
7	其它	无	
版本		REV.1	
DWH 设计	李丹2018-5-28	MODEL 机型: A10T/A12T	Part NO. 物料编号: P/N:110401106524X
CHK 审核		 优利德科技(中国)股份有限公司 UNI-TREND TECHNOLOGY (CHINA) CO.,LTD	
APPRO. 批准			