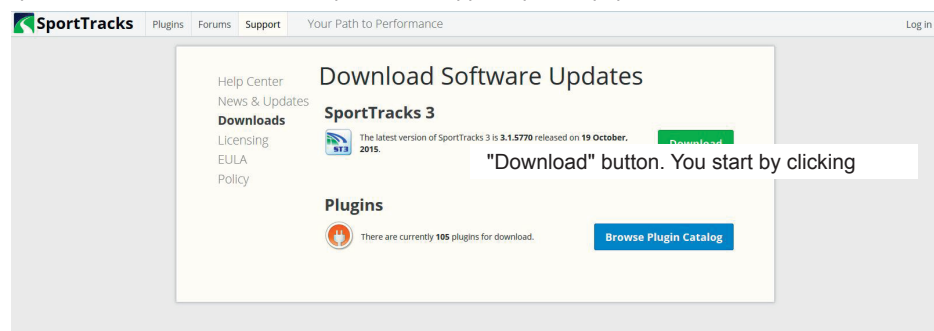


Procedure to install the sporttrack software.

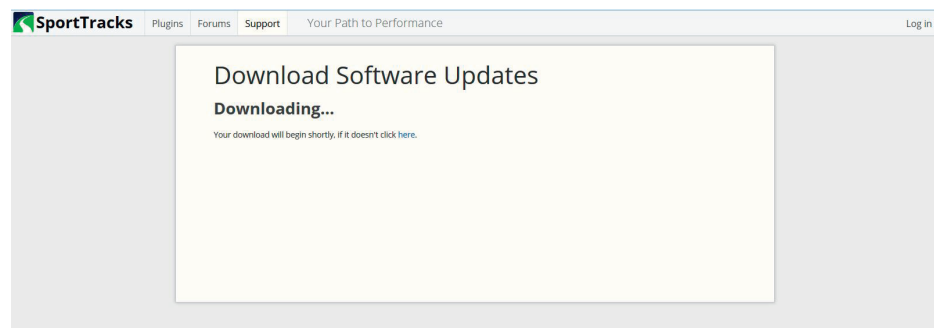
(1) Please download it from the website software:

<https://www.zonefivesoftware.com/sporttracks/support/updates.php>

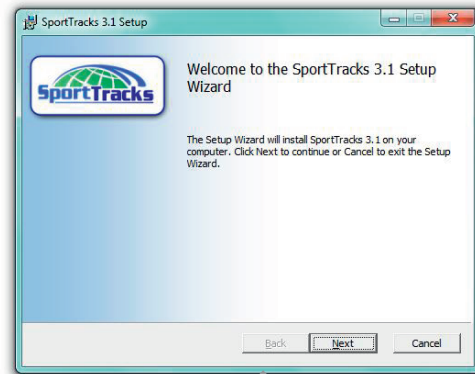


"Download" button. You start by clicking

(2)

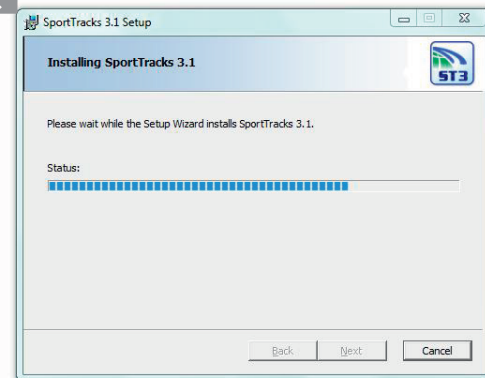


(3) • Install the software that you downloaded.



Double-click the setup file, please start the installation according to the settings screen.

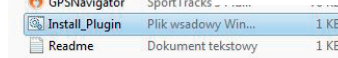
• Please complete by checking the consent of the license.



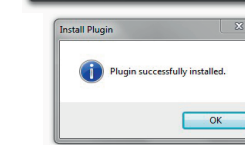
Installation of software, driver and plugin.
Please follow the procedure to instal driver.

Install software, driver and plugin.

(1) Nazwa Typ Double click Instal_Plugin file (Click setup)

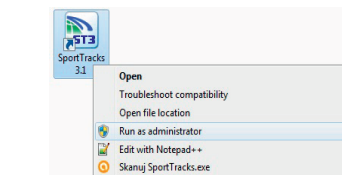


(2) Welcome to the Device Driver Installation Wizard
Click Next



*The required drivers are installed now

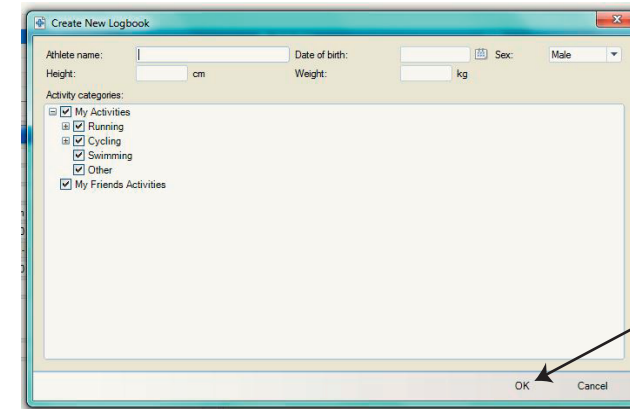
Every time you connect the USB cable to the computer, the operating system will automatically recognize your GPS device.



For Windows 7,8,10: Before start up Sporttrack, right click on sporttrack icon, select "Run as administrator" to run the software.

SPORTTRACK APPLICATION (Import GPS and Pulse date from GPS device)

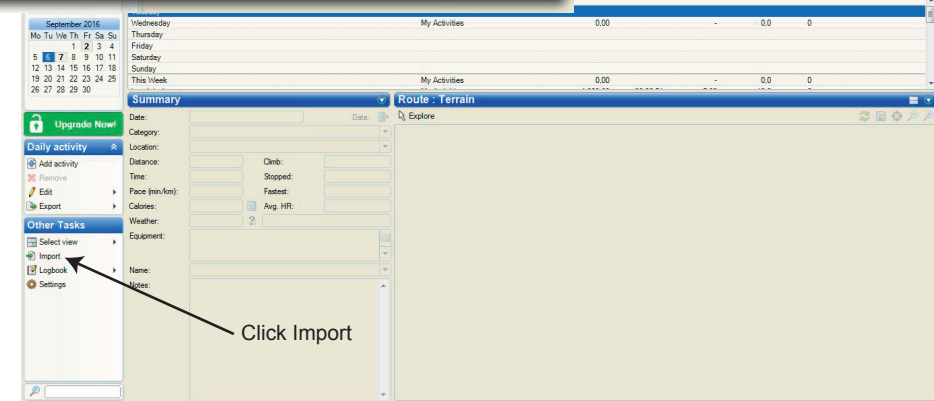
(1)



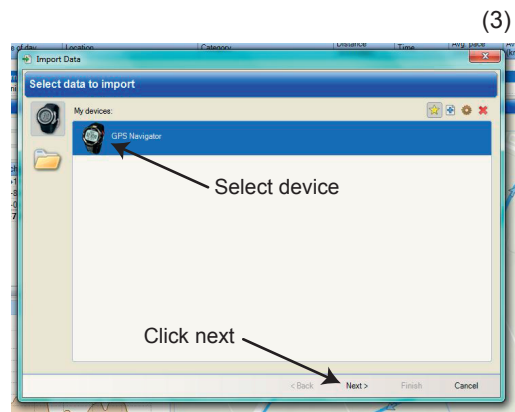
Import data from the watch If user want to have activity record into computer. Turn on sportwatch before the activity, all data will be stored into the watch. After a day of exercise, plug the watch into computer. Follow procedure here.

Click OK

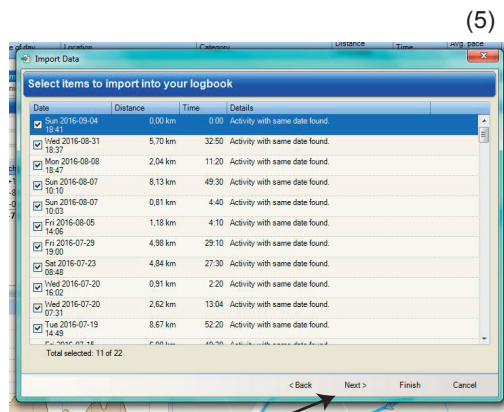
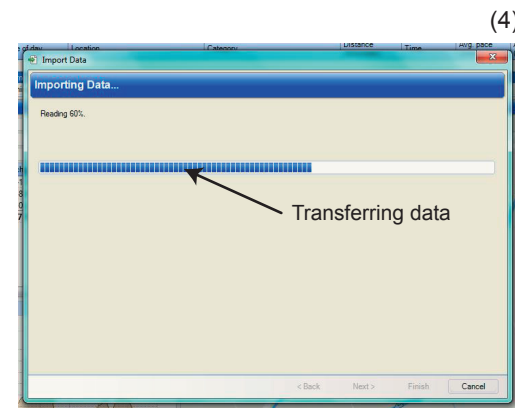
(2)



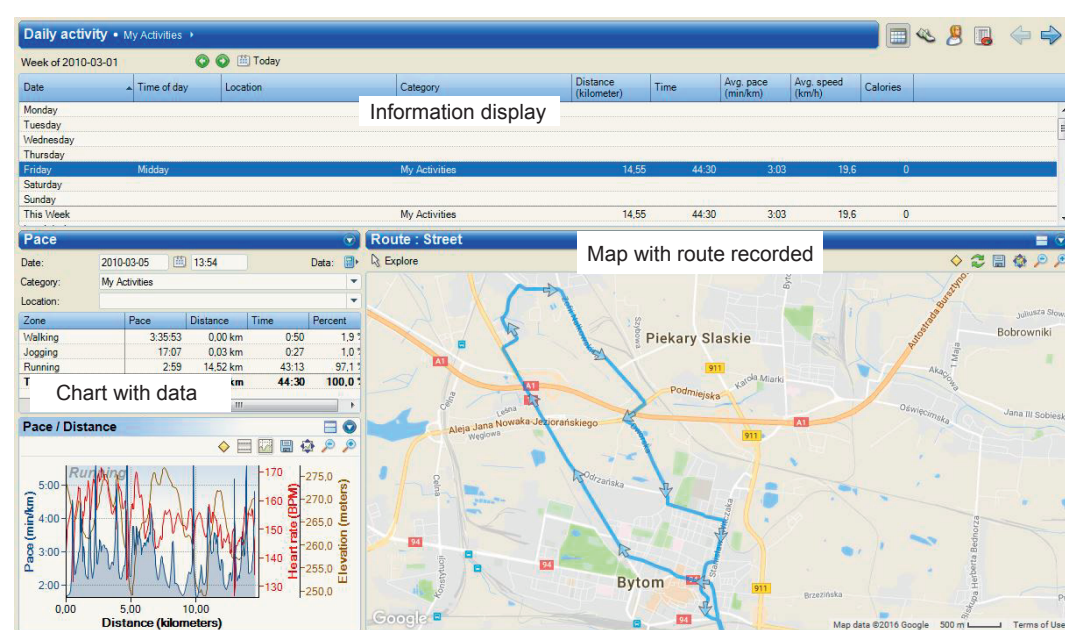
Click Import



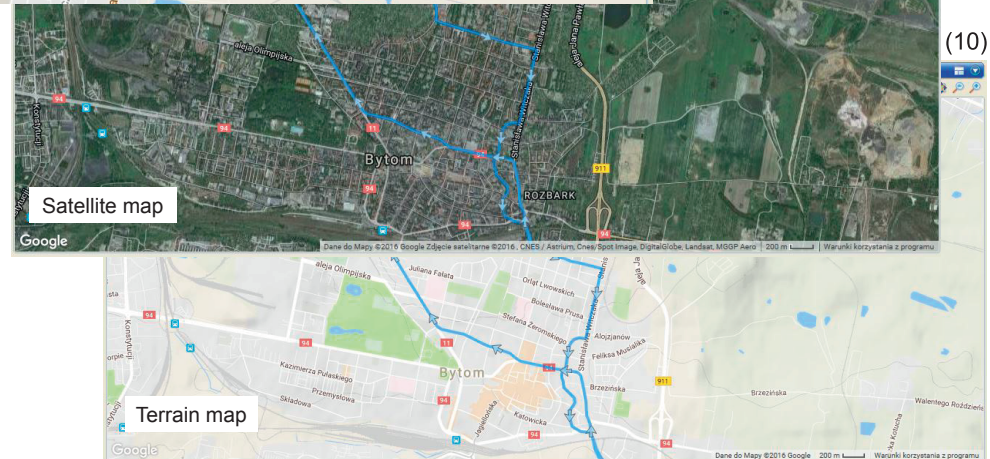
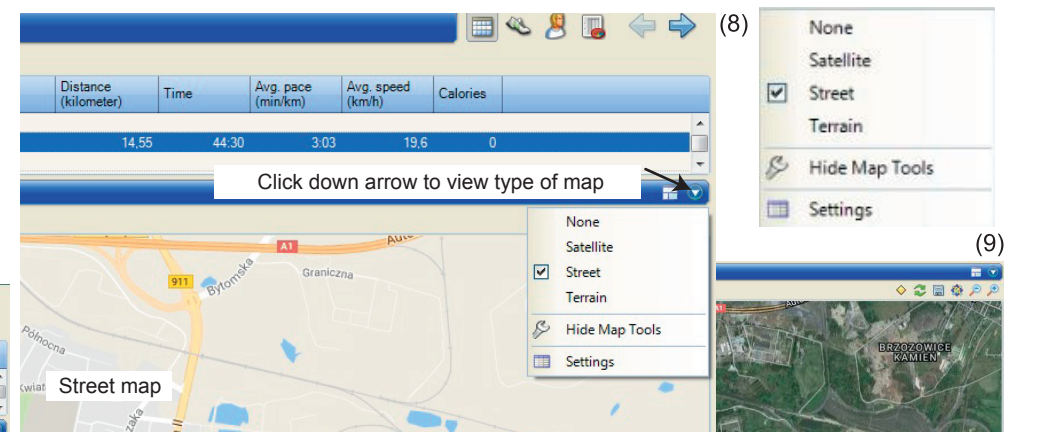
Choose GPS Navigator. Make sure the watch is connected to the computer.

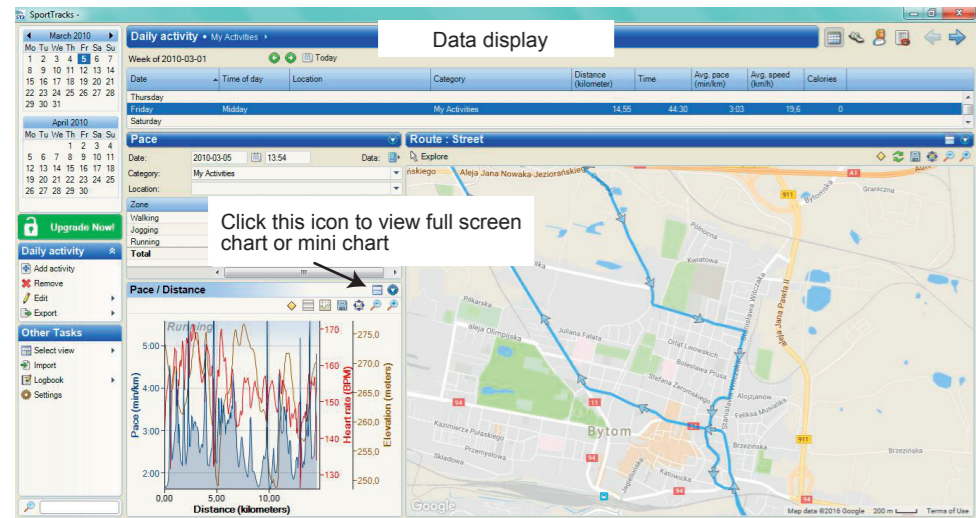


Transfer complete, click Next

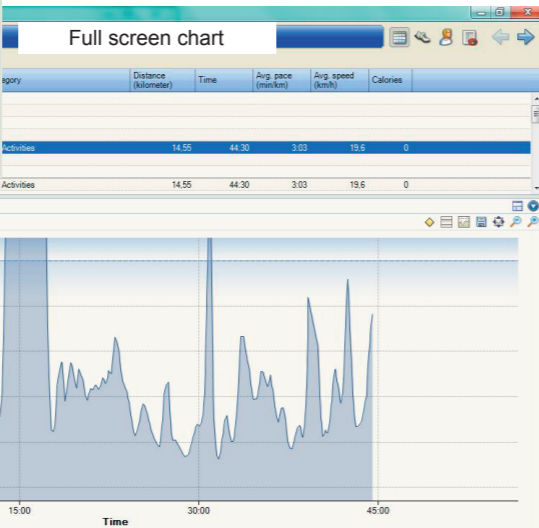


(7)

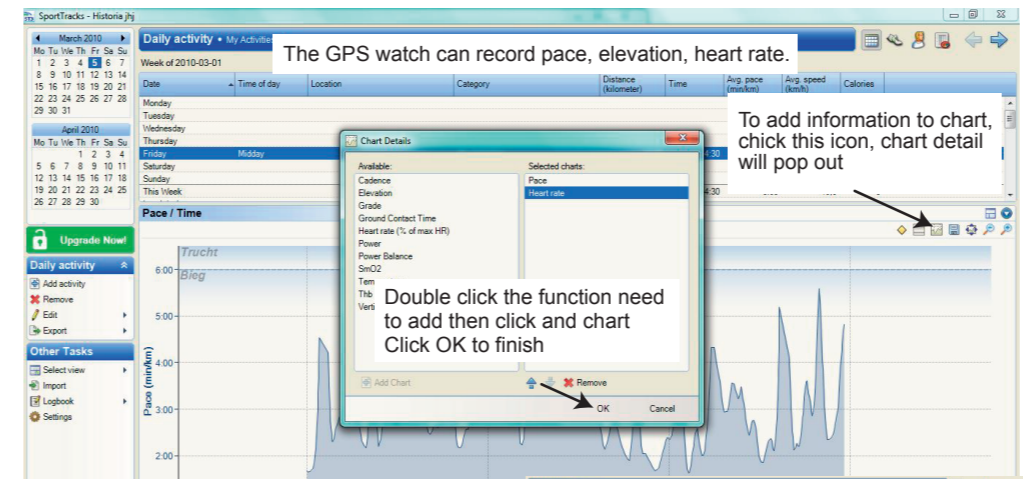




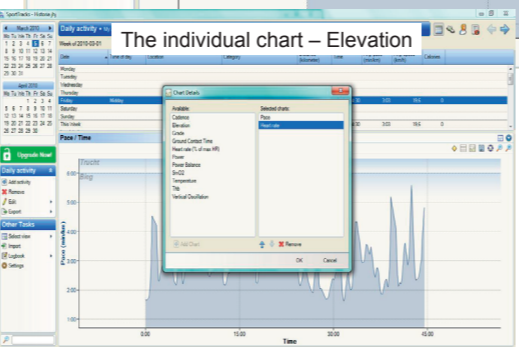
(11)



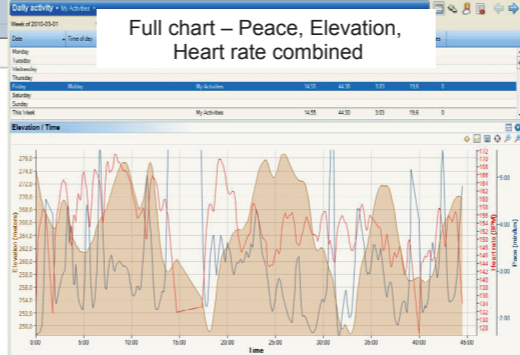
(12)



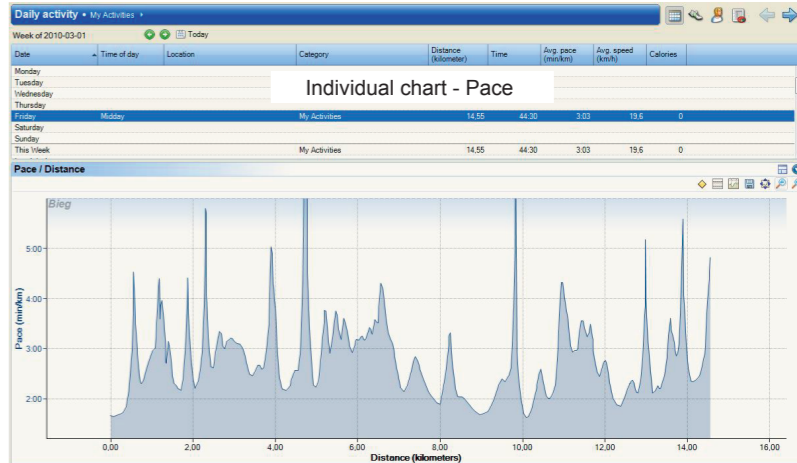
(13)



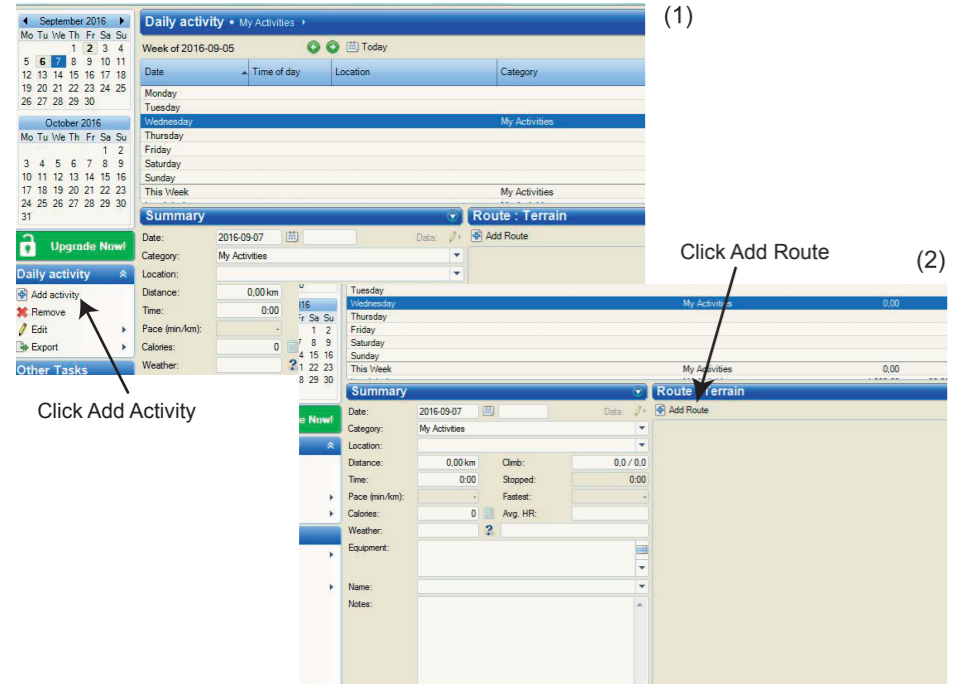
(14)



(15)

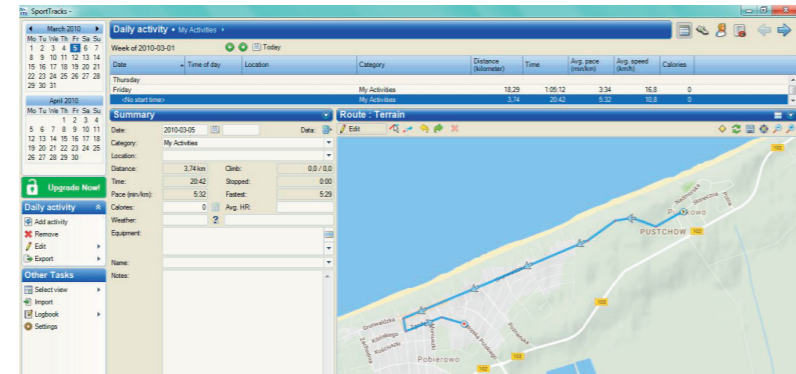


(16)



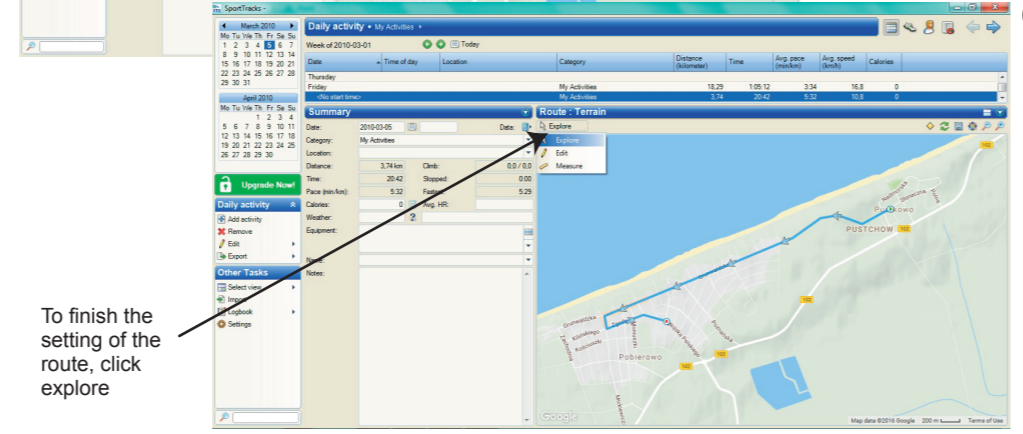
(1)

(2)



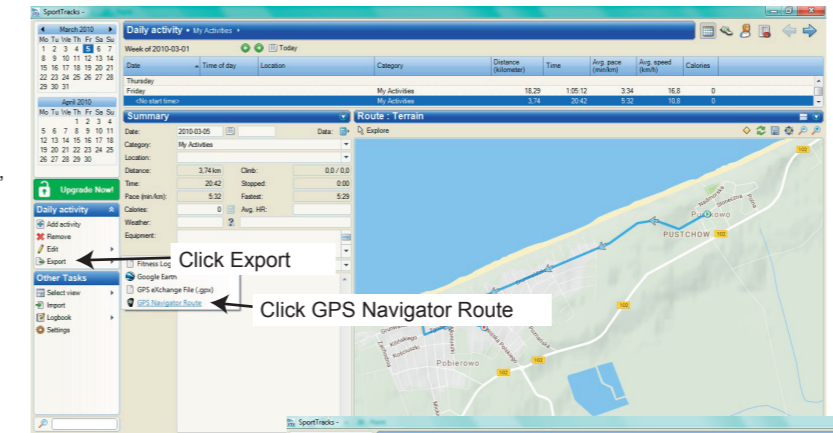
(3)

Move the mouse pointer to the starting position, click the left button, the starting point is marked. Move the pointer to the next turn, a straight line will be created, click the left button on the turning point, then follow the same procedure to reach your destination.



(4)

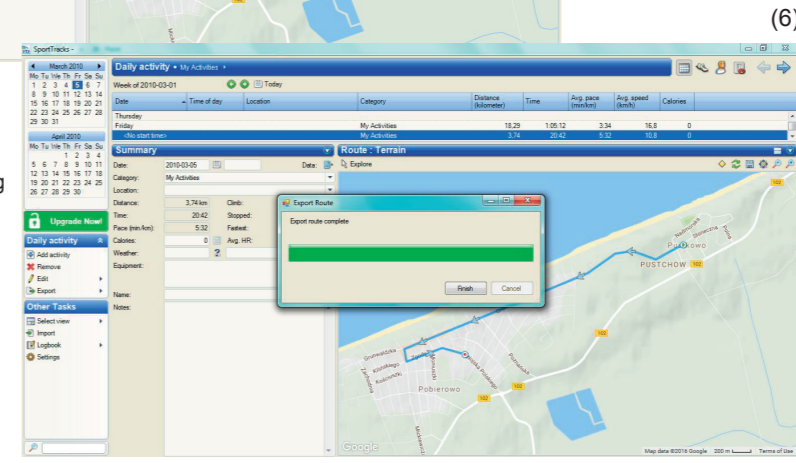
To finish the setting of the route, click explore



(5)

Then Click GPS Navigator Export. Make sure your GPS watch is connected to the Computer through the USB cable Clip.

When Arriving at starting point turn GPS on to Acquire GPS signal. Then watch will guide you to the destination that was preset.



(6)

- TRoute created on sporttrack and export to watch can only be as navigator from starting point to destination.
- Route recorded in the watch can only be use as return home, navigation current location back to starting point.
- To use route record by the watch for navigator, first import route to the computer then export the route back to the watch. This route will be the same as route created on sporttrack.

